

NEW

Compact Explosion-Protected Emergency Light Fitting with Self-Contained Battery Unit Series nD848...



Application:

Hazardous areas in Zones 2 and 22 as safety illumination and as information or escape route lighting.

Mechanical design:

Housing and battery box: Glass fibre reinforced polyester.

Diffuser: Clear polycarbonate with internal prisms, hinged and detachable.

Reflector: White painted sheet steel, hinged and removable.

Central locking system: Operated by a hexagonal box spanner 13mm.

Connection terminals: Standard: L1+N+PE; up to 2.5 mm².

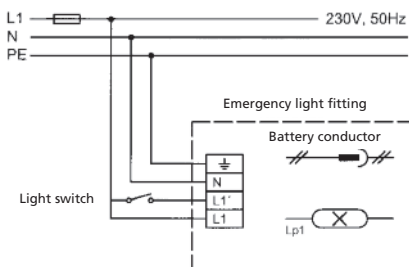
Cable entries: 2 entries M25 x 1.5 (2 cable glands, 1 with blanking plug enclosed).

Through wiring: Standard with looping of mains cable at one end 3 x 2.5mm² (6-wire optional).

Mounting: Side fixing brackets allow direct mounting on to walls or ceilings.

Note:

Special versions available for extreme conditions (wastewater and rainwater reservoirs, water treatment plants) – Please consult us.

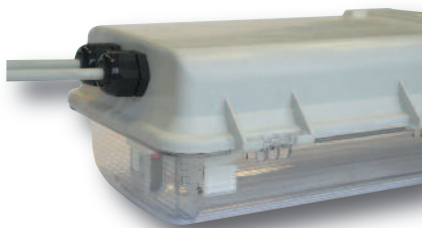
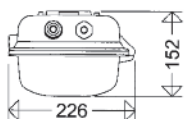
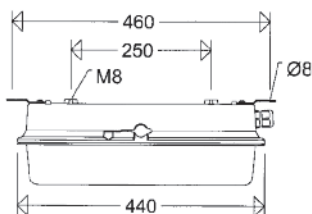


Commissioning: Connect battery

Decommissioning: Disconnect battery

Lamp: Lights in mains operation and in battery mode on mains failure

Stand-by mode: do not connect L11



Looping the cable on one end:

All light fittings of series nD848... have 2 cable entries M25 x 1.5 on the connection end of the housing, thus allowing a more economical cable looping at one end instead of the classical through wiring system (surcharge for 5-pole version).

Electrical design:

Built-in NiCd battery, held in stand-by mode by constant trickle charging

Monitoring:

Automatic monitoring of the emergency function with a weekly function test and an annual operating-time test acc. to DIN EN62034. Test results shown by LEDs on the fitting.

Electronic deep discharge protection with restart inhibit

Ambient temperature:

0°C to + 30°C

Recharging time: 24h, acc. to EN 60598-2-22.

Supply voltage: 220-240V, 50/60Hz

Maintained mode = Switch over to battery operation in the event of a mains failure.

Stand-by mode = emergency lamp only switches ON by mains failure

SCHUCH Quality – your advantage:

- reliable, fail-safe and long-life thanks to a low component integration (separate EVG and emergency automatic)
 - operation on maintained mode, switched maintained mode and stand-by mode possible
 - weekly automatic function test
 - annual automatic operating-time test
 - manual function and operating-time tests possible at anytime
 - easy battery replacement with plug connection
- for use in ambient temperatures from 0°C to + 30°C



nD848...



II 3 G Ex nA IIC T4

II 3 D Ex tD A22 T80°C

IP66



for bi-pin fluorescent tube 8W, socket G5

Other approvals:

GOST-R/ROSTECH-NADZOR (Russia)

Marking:

II 3 G Ex nA IIC T4 (Zone 2)

II 3 D Ex tD A22 IP66 ¹⁾ T80°C (Zone 22)

Permissible ambient temperature:

0°C up to +30°C

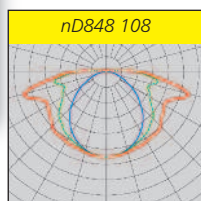
Rated Voltage: 220-240V AC, 50-60Hz.



Types	Article nos.	Lamps W	Flux factor ²⁾ appr. %	Weight ca. kg ³⁾
nD848 108/65/1	84800 0001	1 x T16/8W	65	4,0
nD848 108/40/3	84800 0002	1 x T16/8W	40	4,0

1) If breathers are used, possible reduction of ingress protection to IP64

2) Ratio effective lamp flux to rated current
3) Weights without packing material





Further Series / Equipment

- .../B stand-by mode = emergency lighting in case of mains failure only

Mounting accessories

Suspension bracket H8V P



Ceiling bracket 15A P



Pipe clamp RO84... A



Wall bracket W26 P



Wall bracket W26/45 P



Available upon request:

Self-adhesive legends for marking escape routes acc. to VGB 125 and DIN 4844.



121/33 W



../34



../35

Sighting distance acc. to EN 1838 and DIN 4844 = 25m.

Further Series / Equipment

Type	Article no.	
Spare diffuser		
845	84501 9001	spare diffuser PC
Cable entries / Glands / Breathers		
2537	90117 9000	ex- plastic cable gland M20 x 1.5
2538	90118 9000	ex- plastic cable gland M25 x 1.5
KLIMASTUTZEN EX	90259 9000	M25 x 1,5 ex-breather
Lamp holder		
847/1 T130	90056 9009	lamp holder
Mounting accessories		
H8V P	90001 0002	2 suspension bracket with screws M8, stainless steel
15A P	90000 0002	2 ceiling brackets, hot galvanized steel
15AV P	90032 0002	2 ceiling brackets, stainless steel
RO84 112 A P	90037 0004	2 pipe clamps 1 1/2", stainless steel, with support
RO84 2 A P	90038 0004	2 pipe clamps 2", stainless steel, with support
W 26 P	26000 0004	2 wall brackets, galvanized steel
W 26/30 P	26000 0002	2 wall brackets 30°, galvanized steel
W 26/45 P	26000 0003	2 wall brackets 45°, galvanized steel
Self-adhesive pictogram		
121/33 W	12112 0006	emergency EXIT, left
121/34 W	12112 0007	emergency EXIT, right
121/35 W	12112 0008	emergency EXIT, down