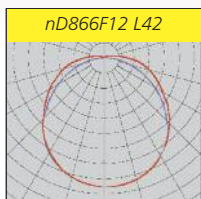
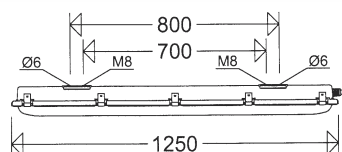
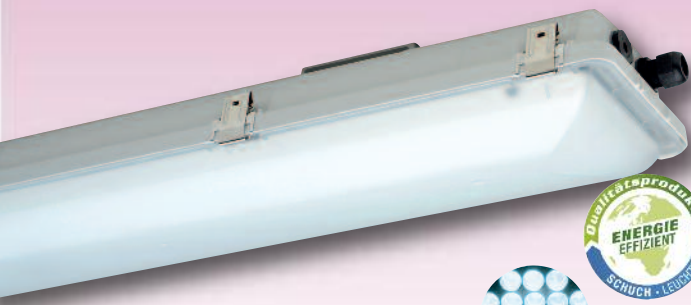


NEW

Explosion-Protected LED-Light Fitting for Zones 2 and 22 Series nD866... LED



Applications:

Hazardous locations of zones 2 (gas) and 22 (dust) as standard illumination or as emergency illumination in combination with external power supply units.

Design:

Housing: Glass fibre reinforced polyester resin.

Cover: Injected polycarbonate, frosted (F) or clear.

Closure: Stainless steel clips (KE), two of them as safety clip (KES), to be opened with screwdriver only.

Reflector: Aluminium, painted, carrying

the LED-modules and all electrical components, clipped into the cover, suspendable.

Connection: 3 poles up to 2,5 mm².

Cable entries: 3 entries M25 x 1,5, (2 glands - one of them is plugged)

Standard: Facing downwards or forwards.

Mechanical installation:

There are closed knock-outs in the housing for direct ceiling mounting. Sealing gaskets can be found inside the light fitting. (Mounting accessories see spare parts/ accessories.

Technical data:

LED: Line modules 5,000K, $R_a > 80$, $L_{70B_{10}} > 50,000h$ at max. ambient temperature
ECG: 220-240V AC/DC, 0 or 50-60Hz, overvoltage, overload, short circuit, excess temperature protection

Ambient temperature: -30°C up to +40°C

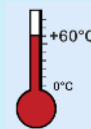
Options:

- dimmable via DALI-interface
- with through-wiring 5 x 2,5mm²

- version for higher ambient temperatures up to +60°C

SCHUCH quality - Your advantage:

- highest efficiency with luminous efficacy up to 126lm/W
- homogeneous illumination by using frosted diffusers (versions nD866F..) no particular light points visible, comfortable perception of light, brilliant glare limitation
- high colour reproduction $R_a > 80$, according to the workplace guide lines suitable for nearly all plant locations
- version with higher luminous flux for areas where higher illumination is needed
- version for high ambient temperatures up to +60°C
- external mounting system for variable mounting distances and easy installation (retaining clips HK865 P)
- lower maintenance and downtime costs due to long maintenance intervals
- ECG and reflector with LED-modules replaceable by qualified personnel on-site



nD866... LED



Ignition protection: nA

Marking:

II 3 G Ex nA IIC T4 Gc (Zone 2)

II 3 D Ex tc IIIC T80°C Dc (Zone 22)

Rated voltage: 220-240V AC/DC, 0 or 50-60Hz.

Permissible ambient temperature:

-30°C bis +40°C

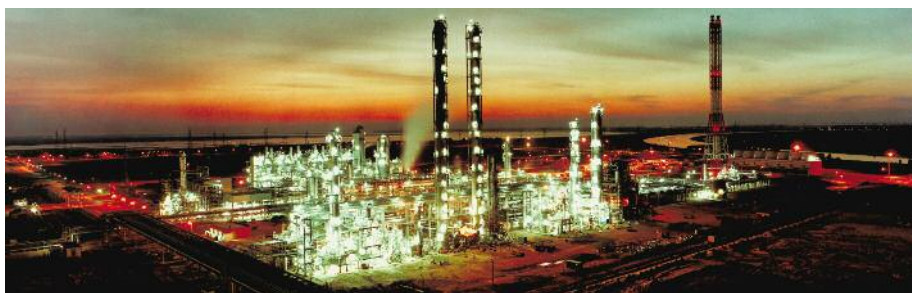
Type	Article no.	Power/ consumption W	Luminous flux* lm	Luminous efficacy* lm/W	Energy efficiency class	Weight ca. kg
optimized for energy consumption (1 : 1 substitute fo fluorescent types)						
nD866F 12L42 ¹⁾	86600 0002	37	4.310	116	A+	4,7
nD866F 12L60 ¹⁾	86600 0003	56	5.580	100	A+	4,7
nD866 12L42 ²⁾	86600 0012	37	4.620	125	A+	4,7
nD866 12L60 ²⁾	86600 0013	56	6.020	108	A+	4,7
with high luminous flux						
nD866F 12L85 ¹⁾	86600 0004	73	8.540	117	A+	4,9
nD866 12L85 ²⁾	86600 0014	73	9.210	126	A+	4,9

* see notes
 1) frosted cover
 2) clear cover

Notes:

Limitations for LED-light fittings: See chapter „Use of LED lighting in corrosive atmospheres“ in the Technical Appendix.

All technical data is relevant at the time of print. Actual technical data can be found in the internet under www.schuch.de.



Accessories / Spare Parts

Type	Article no.	
Spare glasses		
865/12 F	86501 9001	frosted
865/12	86501 9002	clear
Cable glands		
2537 G	90117 9006	ex-protected plastic cable gland M25 x 1,5 with nut
2538 G	90118 9006	ex-protected plastic plug M25 x 1,5 with nut
KLIMASTUTZEN EX	90259 9000	climatic breather M25 x 1,5
Mounting material (if direct ceiling mounting is not possible or wanted)		
HK865 P	86501 9003	2 brackets for variable mounting distances 700-800mm
H8V P	90001 0002	2 hooks with bolts, stainless steel
15A P	90000 0002	2 ceiling brackets, hot galvanized steel
15AV P	90032 0002	2 ceiling brackets, stainless steel
RO84 112 A P	90037 0004	2 pipe clamps 1 1/2", stainless steel, with support
RO84 2 A P	90038 0004	2 pipe clamps 2", stainless steel, with support
W 26 P	26000 0004	2 wall mounting angles
W 26/30 P	26000 0002	2 wall mounting angles 30°
W 26/45 P	26000 0003	2 wall mounting angles 45°